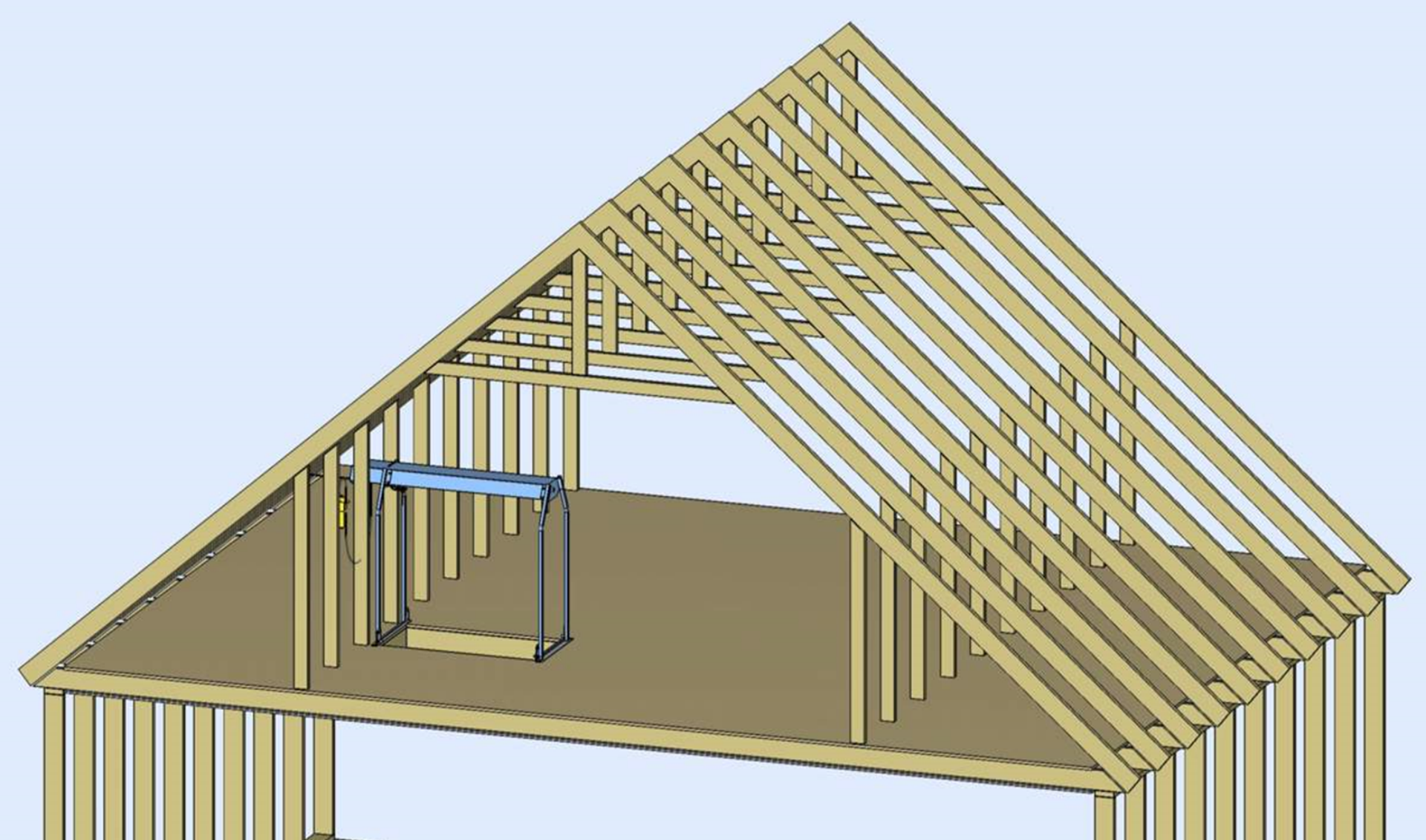


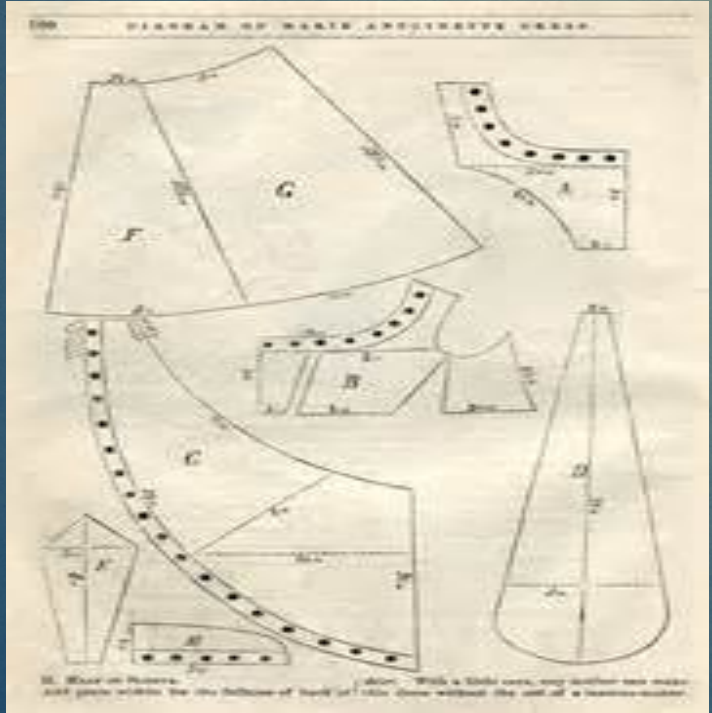
The background is a detailed architectural drawing in white lines on a dark blue background. It shows various sections and elevations of a building, including walls, windows, and ceiling details. Some text in the drawing includes "Panel ceiling, see dashed lines on plan, and scale details", "OAK", "Panel ceiling, see dashed lines", "For Detail see Sha", and "or to into Dept of".

# The Greatest Priest



Panel ceiling, see dashed lines on plan, and scale details

Panel ceiling, see dashed lines



For Detail see sheet

The background of the slide is a detailed architectural drawing in white lines on a dark blue background. It shows various sections and details of a building's interior, including ceiling panels, walls, and structural elements. Annotations like "Panel ceiling, see dashed lines on plan, and scale details" and "OAK" are visible. The drawing is framed by a white border.

# Answer 3 questions

1. What were priests?
2. What did they do?
3. What is their history?

The background of the slide is a detailed architectural drawing in white lines on a dark blue background. It shows various sections and details of a building, including walls, windows, and ceiling panels. Some text in the drawing includes "Panel ceiling, see dashed lines on plan, and scale details", "OAK", "O.P.", and "Panel ceiling, see dashed lines".

# What is a High Priest?

Hebrews 5:1

For every high priest taken from among men is appointed for men in things *pertaining* to God, that he may offer both gifts and sacrifices for sins.

The background of the slide is a detailed architectural drawing in white lines on a dark blue background. It shows various sections and details of a building's interior, including walls, ceilings, and structural elements. Annotations like 'Panel ceiling, see dashed lines on plan, and scale details' and 'OAK' are visible. The drawing is partially obscured by a large white rectangular box containing text.

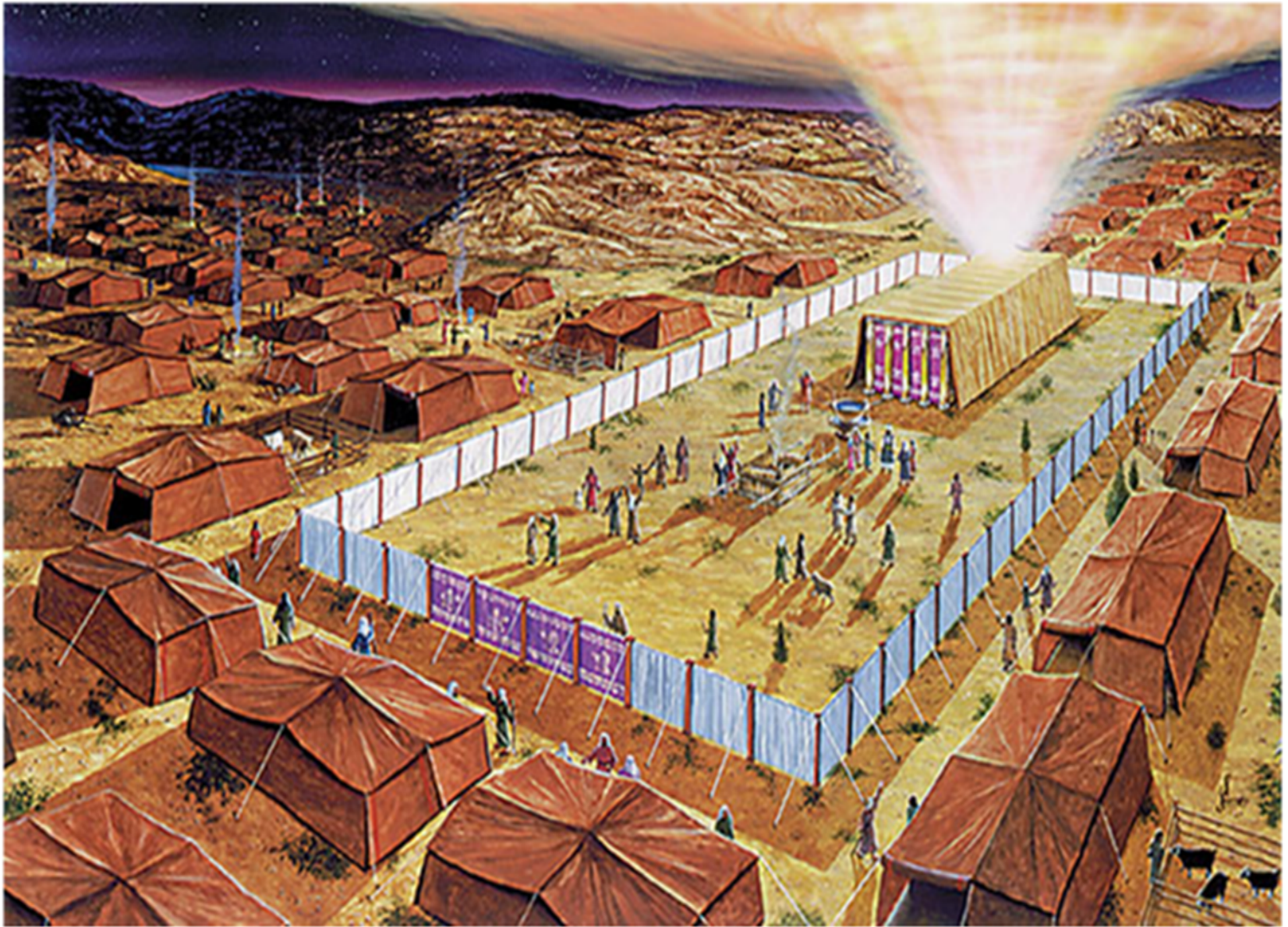
# Bible Dictionary Definition

**Intermediary.** A person appointed to perform the sacred rites of a religion: therefore, a mediatory agent between God and mankind

The background is a detailed architectural drawing of a building's interior, showing various rooms, corridors, and structural elements. The drawing is rendered in a light blue color on a white background. A large, semi-transparent blue rectangle is overlaid on the drawing, containing the text. The text is in a bold, white, sans-serif font. The drawing includes labels such as 'Panel ceiling, see dashed lines on plan, and scale details', 'OAK', 'Panel ceiling, see dashed lines', 'For Detail see She...', and 'or to into Dept of'.

# Duties of the Priest

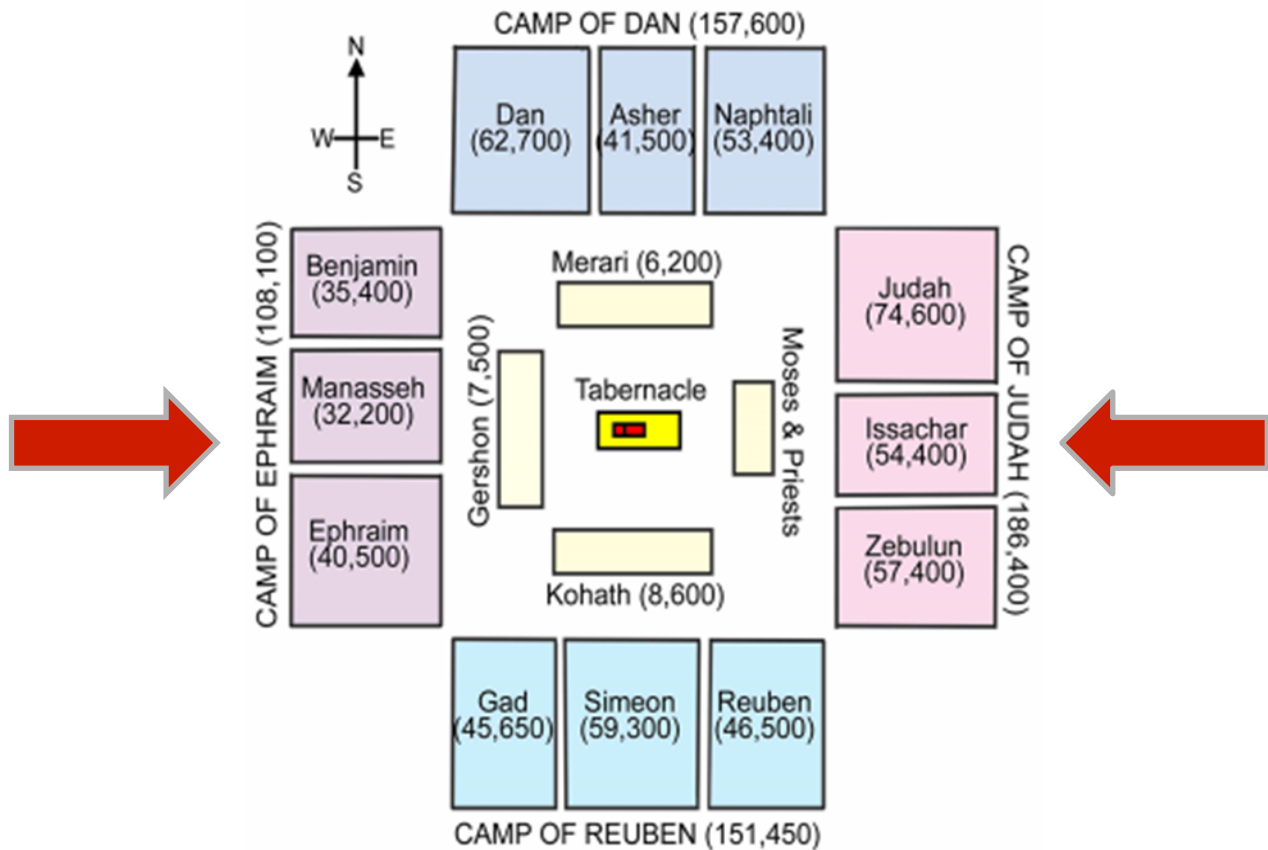
- Levites camped around the tabernacle
- High priest and priests inside the court of the tabernacle





Panel ceiling, see dashed lines on plan, and scale details

Panel ceiling, see dashed lines



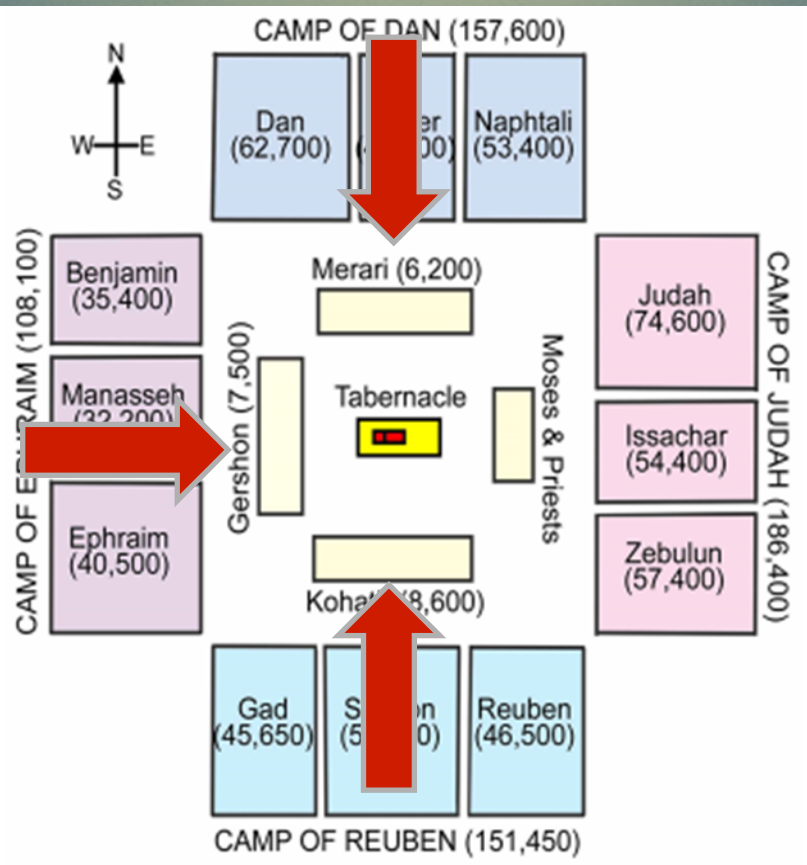
### Arrangement of the Camp of Israel Numbers 2:1-3:39

Copyright 2011, Ralph F. Williams (rwilliams@joyfulheart.com)  
Permission to reprint granted to anyone as copyright line remains

For Detail see sheet

Panel ceiling, see dashed lines on plan, and scale details

Panel ceiling, see dashed lines



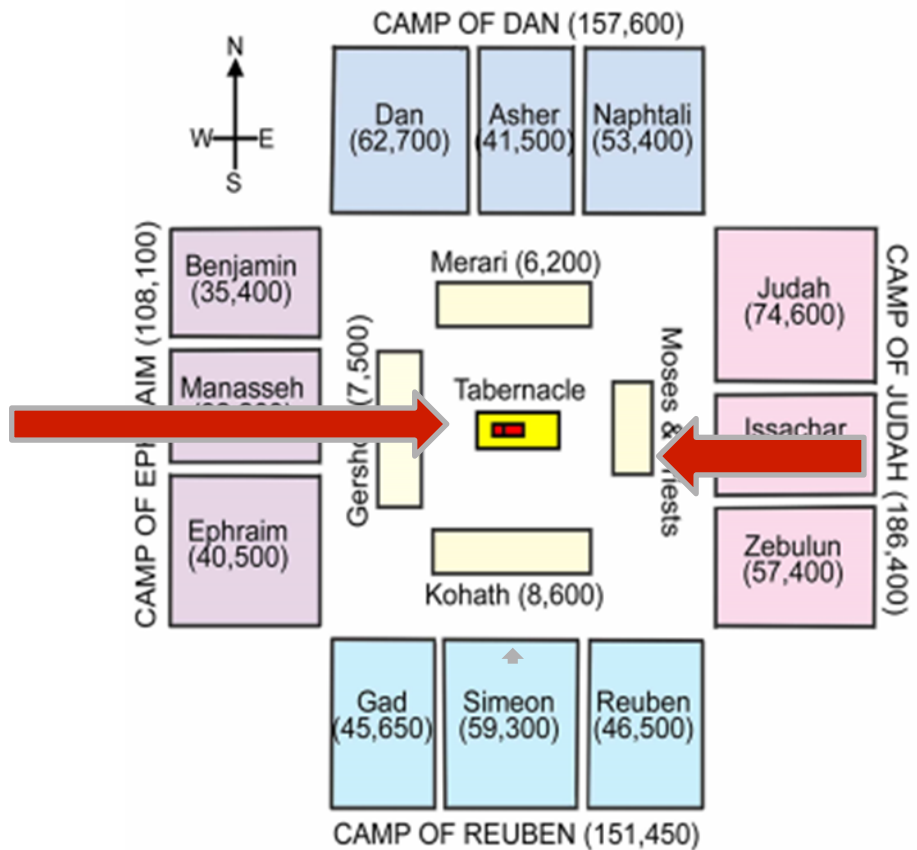
## Arrangement of the Camp of Israel Numbers 2:1-3:39

Copyright 2011, Ralph F. Wilson (pastor@joyfulheart.com)  
Permission to reprint granted to all so long as copyright line remains

For Detail see Sh...

Panel ceiling, see dashed lines on plan, and scale details

Panel ceiling, see dashed lines



## Arrangement of the Camp of Israel

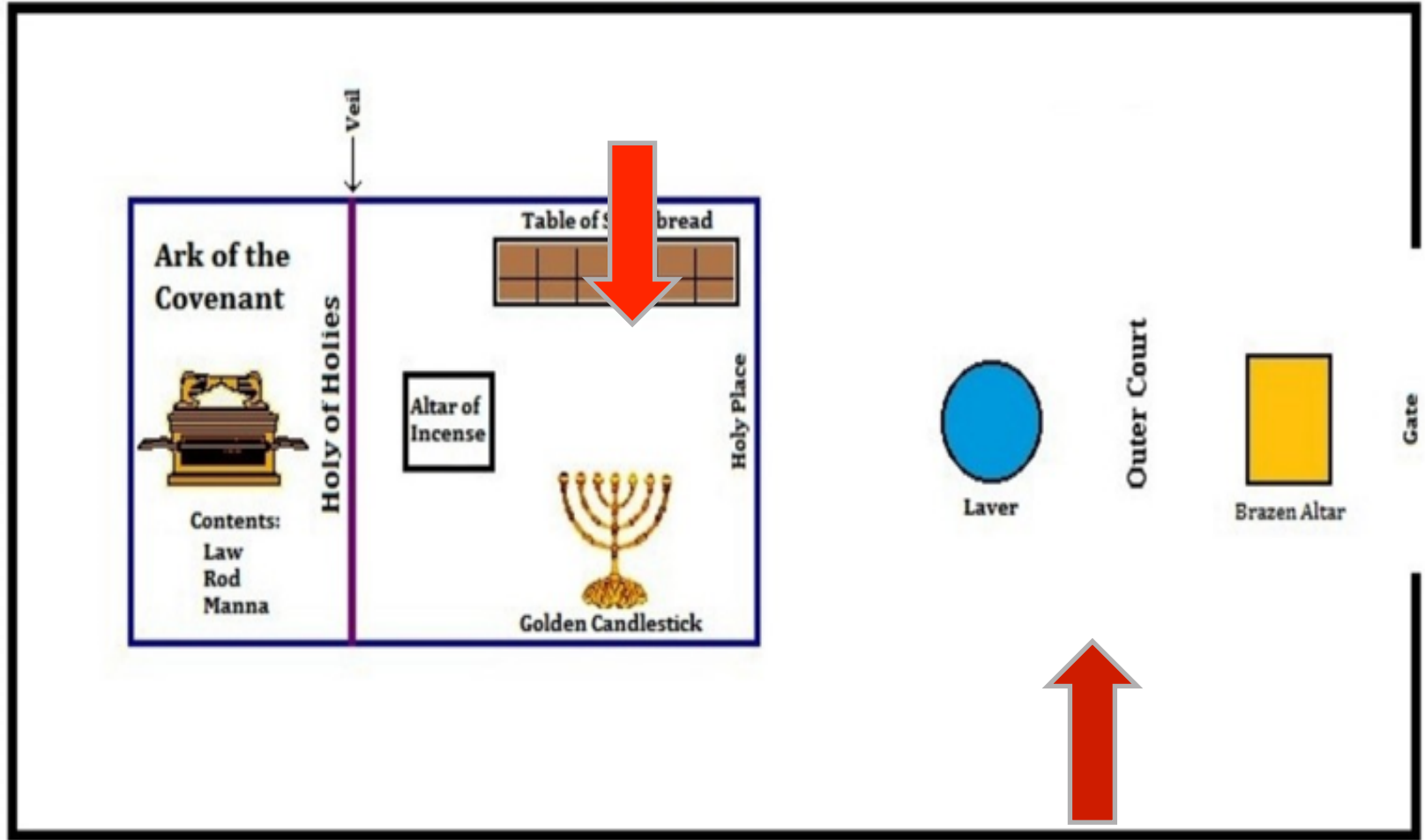
### Numbers 2:1-3:39

Copyright 2011, Ralph F. Wilson (pastor@joyfulheart.com)  
 Permission to reprint granted to all so long as copyright line remains

For Detail see sheet

# MOSES Tabernacle

## Exodus 25



The background of the slide is a detailed architectural drawing in white lines on a dark blue background. It shows various sections and details of a building's interior, including walls, ceilings, and structural elements. Annotations like 'Panel ceiling, see dashed lines on plan, and scale details' and 'OAK' are visible. The drawing is partially obscured by a large dark blue rectangle containing text.

# Duties of the Priests

Offered sacrifices for sin by the people and themselves on a daily basis

The background of the slide is a detailed architectural drawing in white lines on a dark blue background. It shows various sections and details of a building's interior, including walls, ceilings, and structural elements. Annotations such as 'Panel ceiling, see dashed lines on plan, and scale details', 'OAK', and 'For Detail see Sha' are visible. The drawing is a technical representation of a space, likely a church or a formal hall, given the context of the text.

# Hebrews 9:22

And according to the law almost all things are purified with blood, and without shedding of blood there is no remission.

The background is a detailed architectural drawing in white lines on a dark blue background. It shows various sections and details of a building, including walls, floors, and ceilings. Labels like 'Panel ceiling, see dashed lines on plan, and scale details', 'OAK', and 'For Detail see Sha' are visible. The drawing is a technical illustration of a structure, likely a temple or a significant building, with various rooms and structural elements shown in cross-section and plan view.

# Moses given the pattern

Exodus 25:40

And see to it that you make *them*  
according to the pattern which  
was shown you on the mountain.

The background of the slide is a detailed architectural drawing in white lines on a dark blue background. It shows various sections and details of a building, likely a temple or palace, with labels such as 'Panel ceiling, see dashed lines on plan, and scale details', 'OAK', and 'For Detail see Sh...'.

# David Gave Solomon the Pattern

1 Chronicles 28:11

Then David gave his son Solomon the plans for the vestibule, its houses, its treasuries, its upper chambers, its inner chambers, and the place of the mercy seat;



The background of the slide is a detailed architectural drawing in white lines on a dark blue background. It shows various sections and details of a building, including what appears to be a ceiling panel and structural elements. Labels like 'Panel ceiling, see dashed lines on plan, and scale details' and 'OAK' are visible. The drawing is a technical sketch, likely a cross-section or elevation of a structure.

# David Received the Pattern from God

1 Chronicles 28:19

*“All this,” said David, “the LORD made me understand in writing, by His hand upon me, all the works of these plans.”*



The background of the slide is a detailed architectural drawing, likely a cross-section of a building. It shows various structural elements such as walls, floors, and ceilings. There are several annotations in the drawing, including "Panel ceiling, see dashed lines on plan, and scale details" at the top left, "OAK" labels indicating wood materials, and "Panel ceiling, see dashed lines" at the top right. The drawing is rendered in a light blue color on a dark blue background.

# History of Priests

- Exodus 40:13-15
- God authorized Aaron and his sons to be priests throughout their generations

# History of Priests

## From the Exodus to the Babylonian Exile

- Aaron, during the Exodus from Egypt
- Eleazar, son of Aaron
- Phinehas, son of Eleazar
- Abishua, son of Phineas

According to the Samaritans, Shesha is incerted, said to be the son

of Abishua and father to Bukki.

- Bukki, son of Abishua-ancestor of Ezra
- Uzzi, son of Bukki
- Eli, descendant of Itamar, son of Aaron [1]
- Ahitub, son of Phinehas and grandson of Eli
- Ahijah, son of Ahitub



# History of Priests

1. Simon II the Just, 220-190 B.C.
2. Onias III, 190-174 B.C.
3. Jason/Jeshua, 175-172 B.C.
4. Menelaus, 172-162 B.C.
5. Alcimus, 162-156 B.C.
6. Jonathan, 153-142 B.C.
7. Simon, 142-135 B.C.
8. John Hyrcanus I, 134-104 B.C.
9. Aristobulus I, 104-103 B.C.
10. Alexander Jannaeus, 103-76 B.C.
11. Hyrcanus II, 76-67 B.C.
12. Aristobulus II, 67-63 B.C.
13. Hyrcanus II, 63-40 B.C.
14. Antigonus, 40-37 B.C.



# History of Priests

15. Ananel, 37-36 B.C. (Appointed by Herod the Great)
16. Aristobulus III, 35 B.C.
17. Jesus, son of Phiabi, ? -22 B.C.
18. Simon, son of Boethus, 22-5 B.C.
19. Matthias, son of Theophilus, 5-4 B.C.
20. Joseph, son of Elam, 5 B.C.
21. Joezer, son of Boethus, 4 B.C.
22. Eleazar, son of Boethus, 4-1 B.C. -
23. Jesus, son of Sie, 1 - 6 A.D.
24. Annas, 6-15 A.D.
25. Ishmael, son of Phiabi I, 15-16 A.D.
26. Eleazar, son of Annas, 16-17 A.D.
27. Simon, son of Kamithos, 17-18 A.D.
28. Joseph Caiaphas, 18-37 AD.
29. Jonathan, son of Annas, 37 A.D.
30. Theophilus, son of Annas, 37-41 A.D.



# History of Priests

31. Simon Kantheras, son of Boethus, 41-43 A.D.)
32. Matthias, son of Annas, 43-44 A.D.
33. Elionaius, son of Kantheras, 44-45 A.D.
34. Joseph, son of Kami, 45-47 A.D.
35. Ananias, son of Nebedaius, 47-55 A.D.
36. Ishmael, son of Phiabi III, 55-61 A.D.
37. Joseph Qabi, son of Simon, 61-62 A.D.
38. Ananus, son of Ananus, 62 A.D.
39. Jesus, son of Damnaius, 62-65 A.D.
40. Joshua, son of Gamal iel, 63-65 A.D.
41. Matthias, son of Theophilus, 65-67 A.D.
42. Phinnias, son of Samuel, 67-70 A.D.

# Duties of the High Priest



For Detail see She



The background of the slide is a detailed architectural drawing in white lines on a dark blue background. It shows various sections and details of a building, including walls, floors, and ceilings. Some text in the drawing includes "Panel ceiling, see dashed lines on plan, and scale details", "OAK", "Panel ceiling, see dashed lines", and "For Detail see Sha...".

# Duties of the High Priest

- Sacrifices were made for Israel's sin and to reconcile them to God
- Annually

The background of the slide is a detailed architectural drawing in white lines on a dark blue background. It shows various sections and details of a building, including walls, floors, and ceilings. Some parts are labeled with 'OAK' and 'Panel ceiling, see dashed lines on plan, and scale details'.

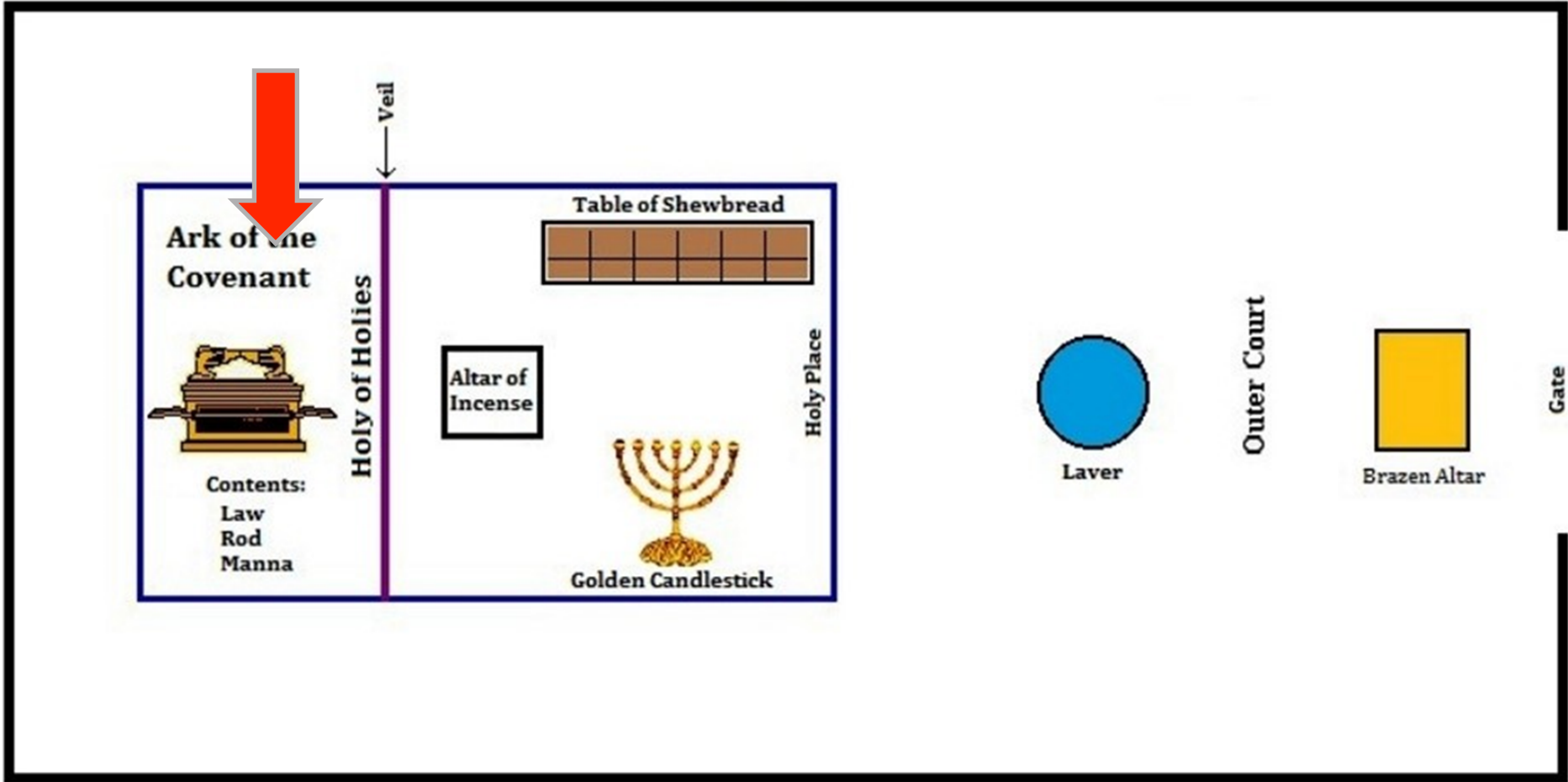
# Day of Atonement

- Changed into white garments
- Bullock offered for the sins of himself and the priests
- Entered the Most Holy Place (through the veil, a separation between God and man)

Panel ceiling, see dashed lines on plan, and scale details

# Moses' Tabernacle

Exodus 25



For Detail see She...

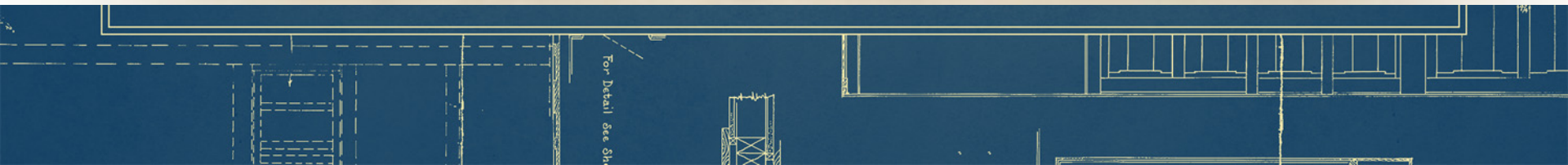
# Day of Atonement

- Cast lots over 2 live goats
- 1 slain as a sin offering for the nation, its blood sprinkled on the mercy seat
- The sins of the people then confessed over the 2<sup>nd</sup> goat (scapegoat) and released into the wilderness

The background of the slide is a detailed architectural drawing of a building's interior, showing various rooms, corridors, and structural elements. The drawing is rendered in a light blue color on a dark blue background. It includes labels such as 'Panel ceiling, see dashed lines on plan, and scale details', 'OAK', 'Panel ceiling, see dashed lines', 'For Detail see Sha...', and 'or to into Dept of'.

# Day of Atonement

- Priest would die if he was unclean or performed on a different day of the year
- Inside the most Holy Place sprinkled blood on the floor and onto the mercy seat



The background is a detailed architectural drawing in white lines on a dark blue background. It shows various sections and elevations of a building, including what appears to be a ceiling structure with panels and a staircase. The drawing includes technical annotations such as 'Panel ceiling, see dashed lines on plan, and scale details', 'OAK', 'or to into Dept. of', and 'For Detail see Sh...'. A large, dark blue rectangular area is superimposed over the center of the drawing, containing the text 'Hebrews 4:14-5:10' in a bold, white, sans-serif font.

# Hebrews 4:14-5:10

The background of the slide is a detailed architectural drawing in white lines on a dark blue background. It shows various sections and details of a building, including walls, floors, and ceilings. Some text in the drawing includes "Panel ceiling, see dashed lines on plan, and scale details", "OAK", "Panel ceiling, see dashed lines", "For Detail see Sha", and "or to into Dept of".

# Christ is a greater Priest:

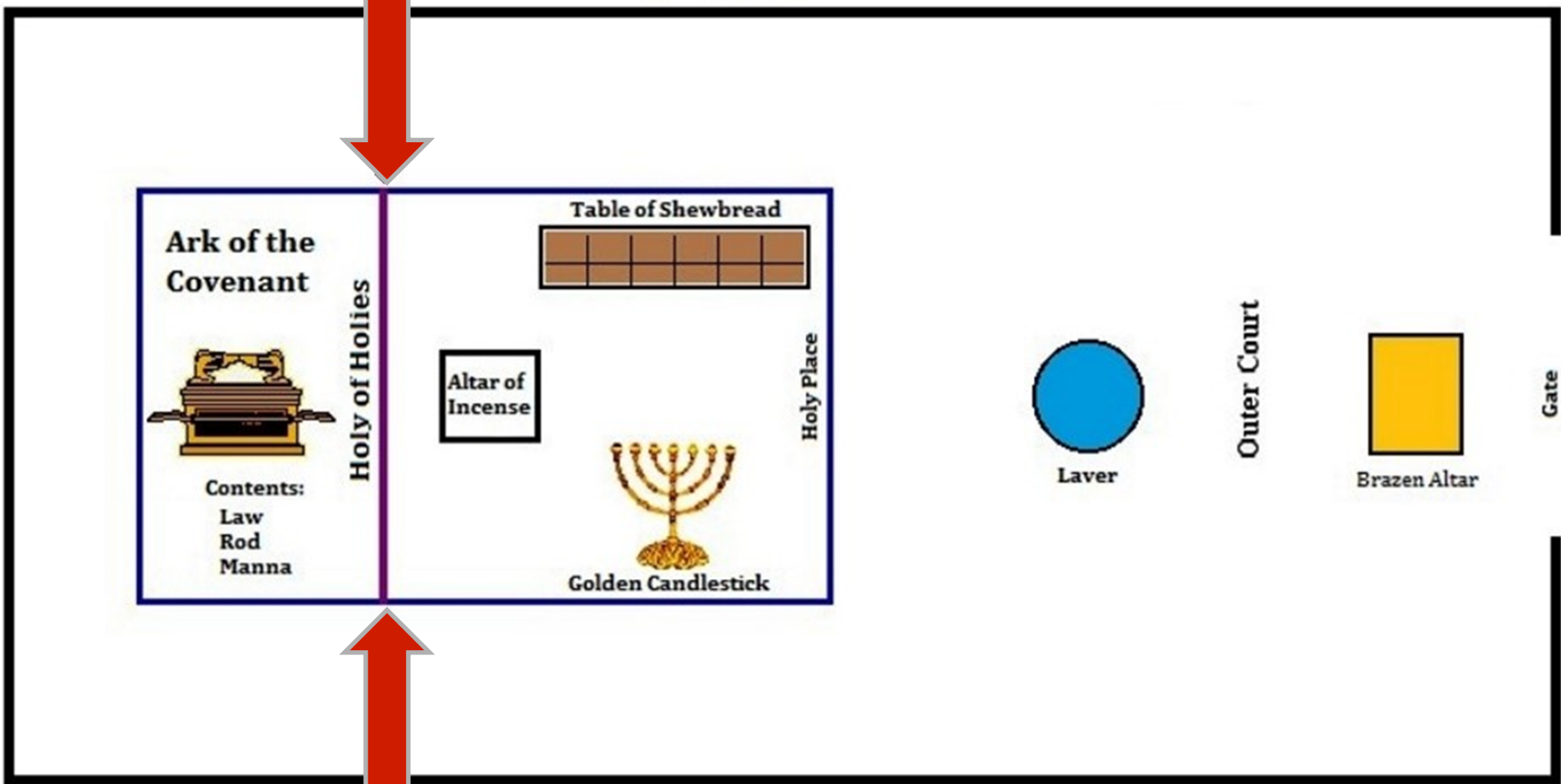
- Man who knows our weaknesses
- He was perfect without sin
- Lives forever
- When Christ died, the veil of the temple was ripped from top to bottom



Panel ceiling, see dashed lines on plan, and scale details

# Moses' Tabernacle

Exodus 25



For Detail see She

The background is a detailed architectural drawing of a building's interior, showing various rooms, columns, and ceiling details. The drawing is rendered in white lines on a dark background. A large, semi-transparent blue rectangle is overlaid on the center of the image, containing text. The text is in a bold, white, sans-serif font. The drawing includes labels such as 'Panel ceiling, see dashed lines on plan, and scale details' and 'OAK'.

# Hebrews 9:11

But Christ came *as* High Priest of the good things to come, with the greater and more perfect tabernacle not made with hands, that is, not of this creation.



# Hebrews 10:1

For the law, having a shadow of the good things to come, *and* not the very image of the things, can never with these same sacrifices, which they offer continually year by year, make those who approach perfect.

# Christ is a greater Priest:

- His body and blood were the perfect sacrifice and propitiation for our sins
- In heaven, at God's right hand
- Mediator
- After the order of Melchizedek (priest and king)



# Melchizedek

King of Salem (Jerusalem)

Priest - not of Aaron

# Hebrews 9:24-28

For Christ has not entered the holy places made with hands, *which are copies* of the true, but into heaven itself, now to appear in the presence of God for us; not that He should offer Himself often, as the high priest enters the Most Holy Place every year with blood of another— He then would have had to suffer often since the foundation of the world; but now, once at the end of the ages, He has appeared to put away sin by the sacrifice of Himself. And as it is appointed for men to die once, but after this the judgment, so Christ was offered once to bear the sins of many. To those who eagerly wait for Him He will appear a second time, apart from sin, for salvation.



## Hebrews 10:19-23

Therefore, brethren, having boldness to enter the Holiest by the blood of Jesus, by a new and living way which He consecrated for us, through the veil, that is, His flesh, and having a High Priest over the house of God, let us draw near with a true heart in full assurance of faith, having our hearts sprinkled from an evil conscience and our bodies washed with pure water. Let us hold fast the confession of our hope without wavering, for He who promised is faithful.

The background of the slide is a detailed architectural drawing in white lines on a dark blue background. It shows various sections and details of a building, including walls, floors, and ceilings. Some parts are labeled with 'OAK' and 'Panel ceiling, see dashed lines on plan, and scale details'.

# 1 Peter 2:5

you also, as living stones, are being built up a spiritual house, a holy priesthood, to offer up spiritual sacrifices acceptable to God through Jesus Christ.



Panel ceiling, see dashed lines on plan, and scale details

Panel ceiling, see dashed lines

OAK

OAK

OAK

Panel

or to  
into Dept. 4

to

For Detail see Sha

